



Nestled among acres of greenery, Vanalika High-End Apartments heralds a new concept in luxurious, green living. With possession already offered to families, these large residential apartments are located in GH-1B, Sector -107 (opp. Sector-47), Noida.



400 FAMILIES ALREADY MOVED IN

## FEATURES

- Club House/Squash Court
- Swimming Pool
- Kids' Splash Pool
- Amphitheatre
- Cricket Pitch
- Basketball Court
- Yoga/Meditation Area
- Badminton Court
- Kids' Play Area
- Guest House



All images are artist's impressions and are indicative only.

SITE OFFICE: GH-1C, CORNER PLOT, SECTOR - 168, NOIDA EXPRESSWAY, NOIDA | CALL: 9910557774/5  
CORPORATE OFFICE: A4, GROUND, SEC - 4, NOIDA 201301, U.P. | TEL.: 0120 4780100  
WWW.SUNWORLD.IN

**SUNWORLD**  
WE GET IT DONE



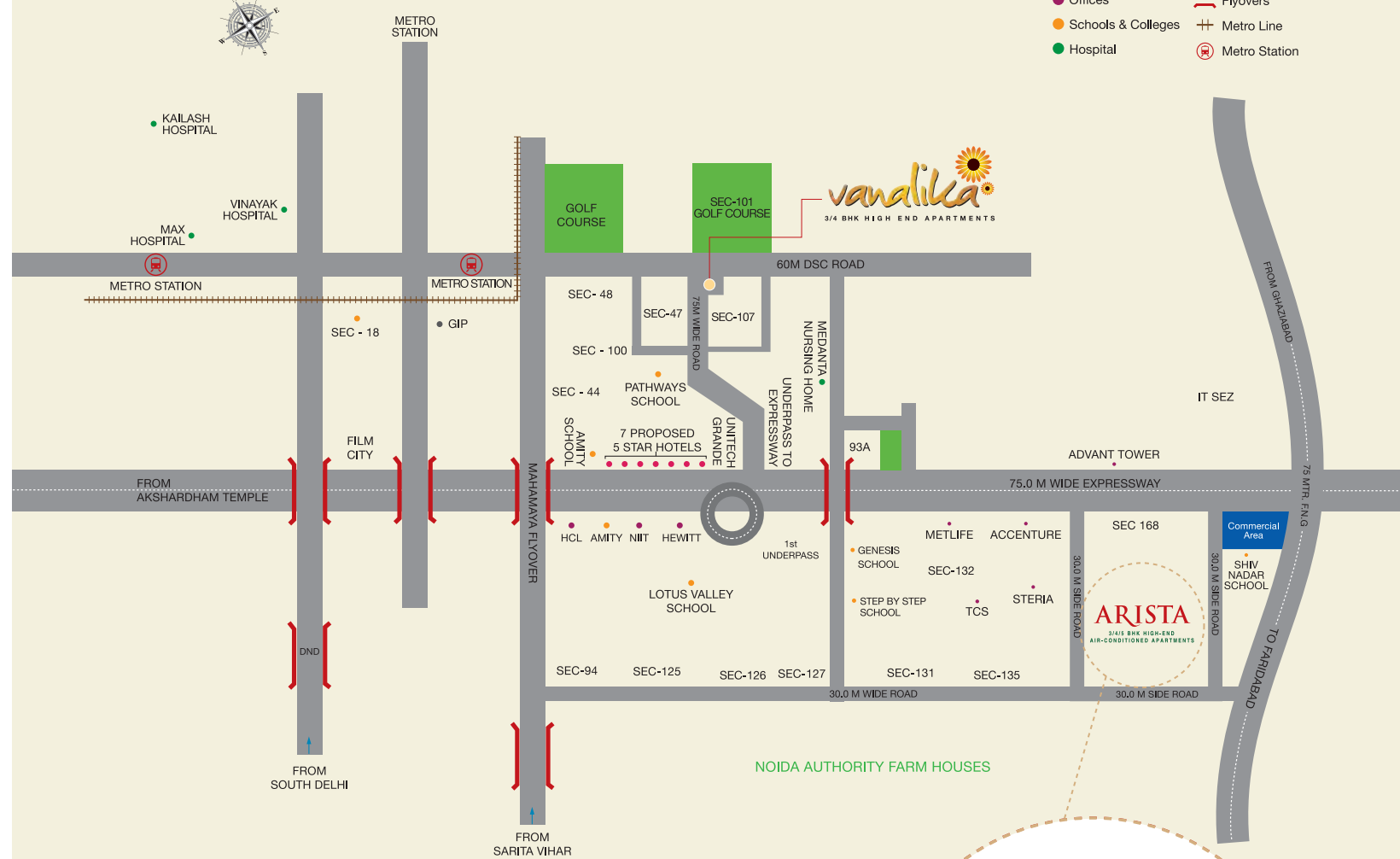
THE FINEST BRITISH ARCHITECTURE  
*comes alive again*

**ARISTA**

3 / 4 / 5 BHK APARTMENTS  
SEC-168, NOIDA EXPRESSWAY

## LOCATION MAP

- Commercial
- Hotel
- Offices
- Schools & Colleges
- Hospital
- Huge Greens
- Roads
- Flyovers
- Metro Line
- ⊕ Metro Station



*A classical residential Masterpiece  
by master architect*

## “HAFEEZ CONTRACTOR”.

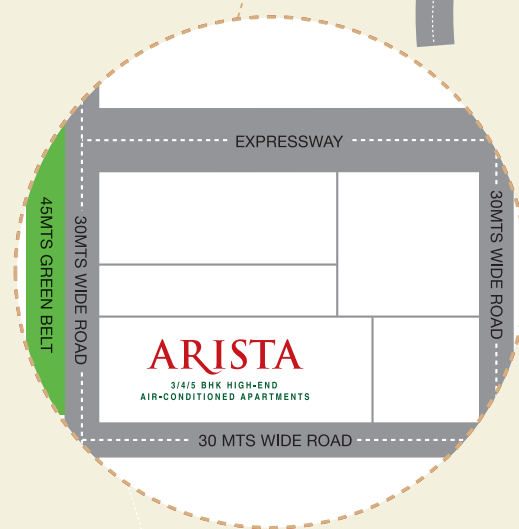
Sunworld Arista is your gateway to a beatific life close to everything that your heart wishes. Discover an intensely serviced residential complex where the best in contemporary living blends harmoniously with serenading natural surroundings. Live close to MNC offices, schools, colleges and retreats of leisure and pleasure. Bask in the freedom of an urban sanctuary that houses spacious apartments in a space meant for twice as many. Live refreshed, at Sunworld Arista.

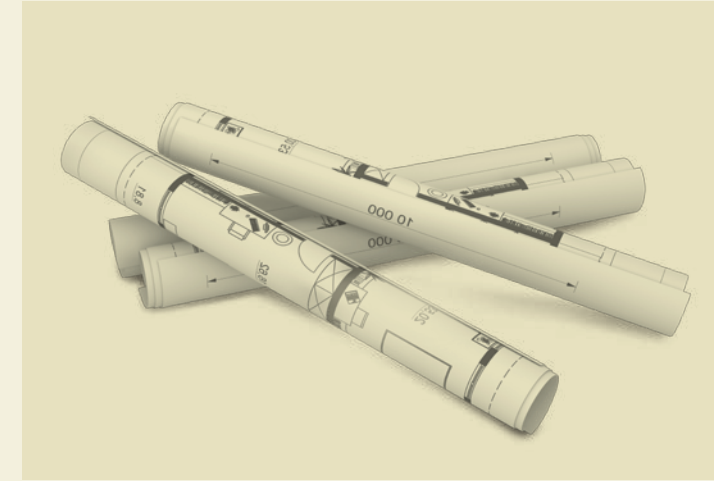
*Close to the expressway, schools,  
colleges, MNC offices.*

## AND CLOSER STILL TO NATURE.

Achieve the perfect balance with the fast paced city life on one hand and tranquility of nature on the other. Strategically located on the Noida Expressway in Sector 168. Sunworld Arista offers prime accessibility to civic amenities and crucial facilities. Now find every destination, far and near, welcome you with open arms.

- Next to MNC Offices
- 1 minute from FNG
- 5 minutes from Sec -18
- 10 minutes from DND Flyover
- 15 minutes from Apollo Hospital
- 20 minutes from South Extension
- 20 minutes from Nehru Place
- 30 minutes from India Gate





## PROJECT HIGHLIGHTS

- *2 side open rectangular Corner plot*
- *10 acres of space*
- *10 towers/ Low density project*
- *Designed by Hafeez Contractor*
- *British Classical Architecture*
- *Largest Apartments in its class*
- *Splendid double height entrance lobby of 25 ft*
- *Separate drop off area for all towers*
- *Air Conditioned Apartments*
- *Next to MNC Offices like Metlife, Accenture, Steria, Infospace, TCS on one side and advant tower (with offices like KPMG, Samsung, Indiamart) on other side*
- *Eating joints like McDonalds, Subway, Dominos etc. across the road*
- *International Standard Schools like step-by-step, Shiv Nadar, Mayoor, Pathways Lotus Valley in close vicinity*
- *Gold rated Green building*
- *Dedicated retail shops for daily needs*
- *5 Acres of central Green promenade*
- *22000sq.ft meticulously designed Club house*
- *Roof top Restaurant*

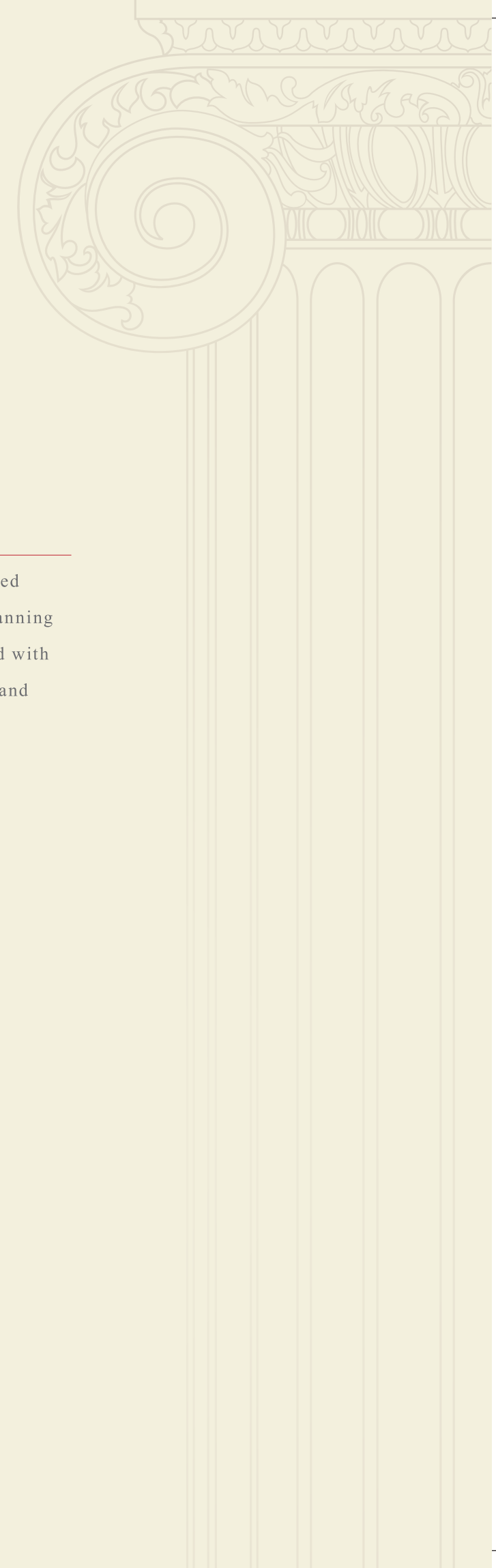


*Discover something*  
**NEW EVERYDAY.**

Let your life sail ever so smoothly, in an intensely serviced residential complex that sets new benchmarks in town planning and accessibility management. Secure your peace of mind with state of the art electronic surveillance. Find every whim and fancy delivered to you on a platter. Live refreshed, in the glorious trinity of serenity, luxury and convenience.

**AMENITIES**

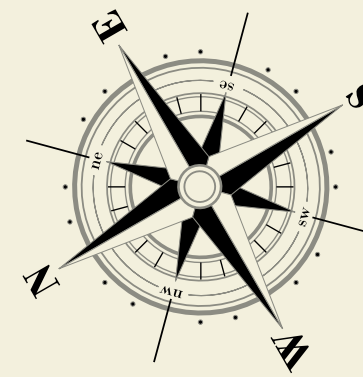
- Ample covered parking space
- Beautifully designed landscaped areas
- Flower garden and lily pond
- Commercial areas • Tennis court
- Elegantly designed central promenade with an amphitheatre
- Separate drop-off areas for each tower
- Squash facilities • Swimming pool & kids' splash pool
- Sit-out for senior citizens • Meditation hut • Party lawn
- Kids' play area • Cricket pitch • Ultra modern club
- Exclusive club lounge for studio apartments
- Exclusive club for super premium apartments
- Rooftop restaurant • Joggers track



# ARISTA

3 / 4 / 5 BHK APARTMENTS  
SEC-168, NOIDA EXPRESSWAY



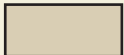


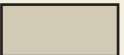






*Endless room for*  
**PEACE AND BEAUTY-**  
*unending apartments in an unending space.*

Cherish a life close to the nature, and closer to your every need. Make your inner child revel in the joy of freedom, with a beautiful green expanse. Mix work and play with great élan, as you set your sight upon a developed commercial area right next door.

**LEGEND**

- |                                 |                        |
|---------------------------------|------------------------|
| A Entry / Exit                  | M Lawn Tennis Court    |
| B Main Drop off with Water Body | N Amphitheater         |
| C Tower Drop off                | P Interactive Fountain |
| D Hibiscus Garden               | Q Flower Garden        |
| E Pool & Deck Area              | R Pergola Seating      |
| F Kids Pool                     | S Car Parking          |
| G Pavilions                     | T Ramp                 |
| H Kids Play / TOT Lot           | U Party Lawn           |
| J Connecting Pathways           | V Cricket Pitch        |
| K Yoga and Meditation Area      | W Badminton Court      |
| L Tower Exits                   | X Jogging Track        |
|                                 | Y Zen Garden           |

- |   |  |  |  |
|---|--|--|--|
|  TYPE A |  TYPE B |  TYPE C |  TYPE D |
|  TYPE E |  TYPE F |  TYPE G |  TYPE H |

## STUDIO APARTMENT UNIT PLAN 1 BEDROOM + 1 TOILET

TYPE H - Super Area : 685 sq.ft. (63.64 sq.mtr)  
 Carpet Area : 36.30 sq.mtr (390.73 sq.ft)  
 Exclusive Balconies Area : 6.89 sq.mtr (74.16 sq.ft)

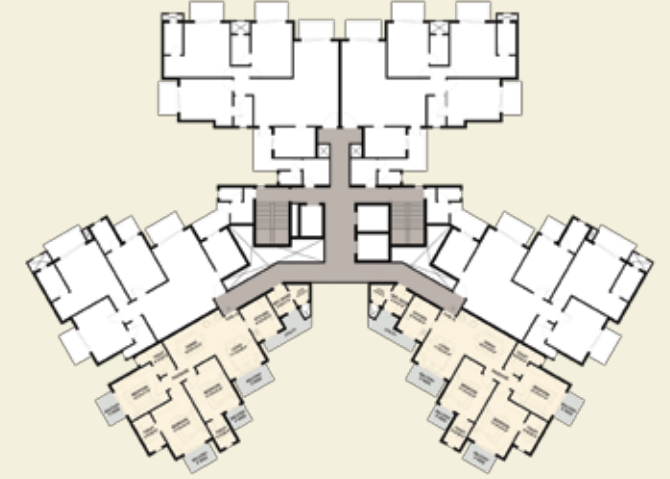
- 1 Bedroom
- 1 Toilet
- 1 Living
- 1 Entrance Lobby
- 1 Kitchenette
- 2 Balconies



## UNIT PLAN 3 BEDROOM + 3 TOILET

TYPE G - Super Area : 1955 sq.ft. (181.62 sq.mtr)  
 Carpet Area : 100.15 sq.mtr (1078 sq.ft)  
 Exclusive Balconies Area : 26.96 sq.mtr (290.20 sq.ft)

- 3 Bedroom
- 3 Toilet
- 1 Living + Dining Room
- 1 Servant Room
- 1 Kitchen
- 4 Balconies
- 1 Utility Deck



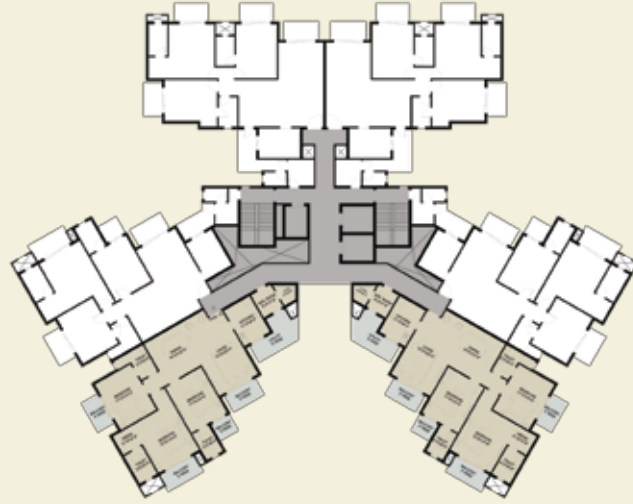
## UNIT PLAN 3 BEDROOM + 3 TOILET

TYPE D - Super Area : 2230 sq.ft. (207 sq.mtr)

Carpet Area : 118.72 sq.mtr (1277.89 sq.ft)

Exclusive Balconies Area : 28.30 sq.mtr (304.61 sq.ft)

- 3 Bedroom
- 3 Toilet
- 1 Living
- 1 Dining Room
- 1 Servant Room
- 1 Dressing Room
- 1 Kitchen
- 4 Balconies
- 1 Utility Deck



## UNIT PLAN 3 BEDROOM + 3 TOILET

TYPE E - Super Area : 2185 sq.ft. (202.99 sq.mtr)

Carpet Area : 119.50 sq.mtr (1286.28 sq.ft)

Exclusive Balconies Area : 24.10 sq.mtr (259.41 sq.ft)

- 3 Bedroom
- 3 Toilet
- 1 Living
- 1 Dining Room
- 1 Servant Room
- 1 Dressing Room
- 1 Kitchen
- 4 Balconies
- 1 Utility Deck

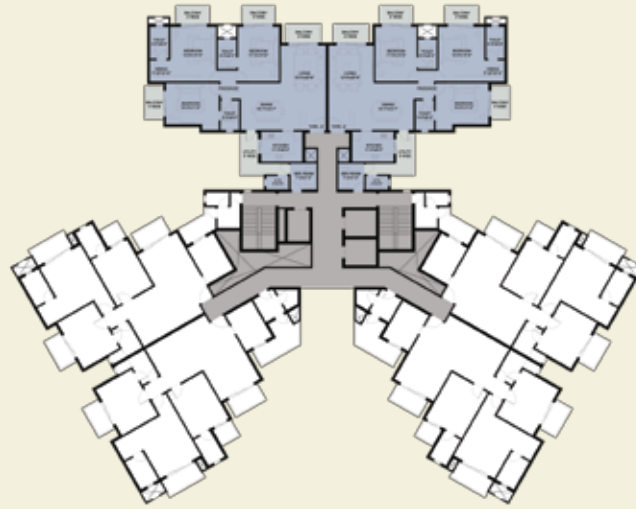




## UNIT PLAN 3 BEDROOM + 3 TOILET

TYPE F - Super Area : 2275 sq.ft. (211 sq.mtr)  
 Carpet Area : 120.08 sq.mtr (1292.53 sq.ft)  
 Exclusive Balconies Area : 28.96 sq.mtr (311.72 sq.ft)

- 3 Bedroom
- 3 Toilet
- 1 Living
- 1 Dining Room
- 1 Servant Room
- 1 Dressing Room
- 1 Kitchen
- 4 Balconies
- 1 Utility Deck



## UNIT PLAN 4 BEDROOM + 4 TOILET

TYPE C - Super Area : 2740 sq.ft. (254.55 sq.mtr)  
 Carpet Area : 154.50 sq.mtr (1663 sq.ft)  
 Exclusive Balconies Area : 29.87 sq.mtr (321.51 sq.ft)

- 4 Bedroom
- 4 Toilet
- 1 Living
- 1 Dining Room
- 1 Entrance Lobby
- 1 Servant Room
- 1 Puja Room
- 1 Dressing Room
- 1 Kitchen
- 4 Balconies
- 1 Utility Deck



## UNIT PLAN 4 BEDROOM + 4 TOILET

TYPE B - Super Area : 3590 sq.ft. (333.52 sq.mtr)

Carpet Area : 202.39 sq.mtr (2178.50 sq.ft)

Exclusive Balconies Area : 39.54 sq.mtr (425.60 sq.ft)

- 4 Bedroom
- 4 Toilet
- 1 Living
- 1 Dining Room
- 1 Family Lounge
- 1 Entrance Lobby
- 1 Powder Room
- 1 Servant Room
- 1 Puja Room
- 1 Dressing Room
- 1 Kitchen
- 5 Balconies
- 1 Utility Deck



Legal Disclaimer: All contents of this document with respect to flat/unit of Sunworld Residency Pvt. Ltd. is subject to The Real Estate (Regulation and Development) Act 2016, rules framed thereunder and implementation, thereof.”

